



VIRTUAL GPU SOFTWARE R430 FOR RED HAT ENTERPRISE LINUX WITH KVM

RN-08687-001 _v9.0 through 9.2 | November 2019

Release Notes



TABLE OF CONTENTS

Chapter 1. Release Notes	1
1.1. Updates in Release 9.0.....	2
1.2. Updates in Release 9.1.....	2
1.3. Updates in Release 9.2.....	2
Chapter 2. Validated Platforms	4
2.1. Supported NVIDIA GPUs and Validated Server Platforms.....	4
2.2. Hypervisor Software Releases.....	5
2.3. Guest OS Support.....	6
2.3.1. Windows Guest OS Support.....	6
2.3.2. Linux Guest OS Support.....	7
2.4. NVIDIA CUDA Toolkit Version Support.....	8
2.5. Multiple vGPU Support.....	9
2.6. Peer-to-Peer CUDA Transfers over NVLink Support.....	10
Chapter 3. Known Product Limitations	12
3.1. Total frame buffer for vGPUs is less than the total frame buffer on the physical GPU.....	12
3.2. Issues may occur with graphics-intensive OpenCL applications on vGPU types with limited frame buffer.....	13
3.3. In pass through mode, all GPUs connected to each other through NVLink must be assigned to the same VM.....	13
3.4. vGPU profiles with 512 Mbytes or less of frame buffer support only 1 virtual display head on Windows 10.....	14
3.5. NVENC requires at least 1 Gbyte of frame buffer.....	14
3.6. VM running older NVIDIA vGPU drivers fails to initialize vGPU when booted.....	15
3.7. Single vGPU benchmark scores are lower than pass-through GPU.....	15
3.8. nvidia-smi fails to operate when all GPUs are assigned to GPU pass-through mode.....	17
Chapter 4. Resolved Issues	18
Chapter 5. Known Issues	20
5.1. 9.0, 9.1 Only: ECC memory with NVIDIA vGPU is not supported on Tesla M60 and Tesla M6	20
5.2. 9.0, 9.1 Only: Virtual GPU fails to start if ECC is enabled.....	20
5.3. 9.0 only: Hypervisor host hangs when persistence mode is set.....	22
5.4. RAPIDS cuDF merge fails on NVIDIA vGPU.....	23
5.5. 9.0 only: Incorrect ECC error counts are reported for vGPUs on some GPUs.....	23
5.6. ECC memory settings for a vGPU cannot be changed by using NVIDIA X Server Settings... 24	24
5.7. Changes to ECC memory settings for a Linux vGPU VM by nvidia-smi might be ignored.....	25
5.8. 9.0 only: VM crashes after the volatile ECC error count is reset.....	25
5.9. 9.0 only: No vComputeServer option available in NVIDIA X Server Settings.....	26
5.10. 9.0 only: On Linux VMs, the license directory is not deleted when the guest driver is uninstalled.....	28
5.11. Vulkan applications crash in Windows 7 guest VMs configured with NVIDIA vGPU.....	28
5.12. Host core CPU utilization is higher than expected for moderate workloads.....	29

5.13. Frame capture while the interactive logon message is displayed returns blank screen...	29
5.14. RDS sessions do not use the GPU with some Microsoft Windows Server releases.....	30
5.15. Even when the scheduling policy is equal share, unequal GPU utilization is reported.....	31
5.16. When the scheduling policy is fixed share, GPU utilization is reported as higher than expected.....	32
5.17. License is not acquired in Windows VMs.....	33
5.18. nvidia-smi reports that vGPU migration is supported on all hypervisors.....	33
5.19. Hot plugging and unplugging vCPUs causes a blue-screen crash in Windows VMs.....	34
5.20. Luxmark causes a segmentation fault on an unlicensed Linux client.....	34
5.21. Resolution is not updated after a VM acquires a license and is restarted.....	35
5.22. A segmentation fault in Dbus code causes nvidia-gridd to exit on Red Hat Enterprise Linux and CentOS.....	35
5.23. No Manage License option available in NVIDIA X Server Settings by default.....	36
5.24. Licenses remain checked out when VMs are forcibly powered off.....	37
5.25. VM bug checks after the guest VM driver for Windows 10 RS2 is installed.....	38
5.26. GNOME Display Manager (GDM) fails to start on Red Hat Enterprise Linux 7.2 and CentOS 7.0.....	38

Chapter 1.

RELEASE NOTES

These *Release Notes* summarize current status, information on validated platforms, and known issues with NVIDIA vGPU software and associated hardware on Red Hat Enterprise Linux with KVM.



The most current version of the documentation for this release of NVIDIA vGPU software can be found online at [NVIDIA Virtual GPU Software Documentation](#).

The releases in this release family of NVIDIA vGPU software include the software listed in the following table:

Software	9.0	9.1	9.2
NVIDIA Virtual GPU Manager for the Red Hat Enterprise Linux with KVM releases listed in Hypervisor Software Releases	430.27	430.46	430.67
NVIDIA Windows driver	431.02	431.79	432.08
NVIDIA Linux driver	430.30	430.46	430.63



Caution

If you install the wrong NVIDIA vGPU software packages for the version of Red Hat Enterprise Linux with KVM you are using, NVIDIA Virtual GPU Manager will fail to load.

The releases of the vGPU Manager and guest VM drivers that you install must be compatible. Different versions of the vGPU Manager and guest VM driver from within the same main release branch can be used together. For example, you can use the vGPU Manager from release 9.1 with guest VM drivers from release 9.0. However, versions of the vGPU Manager and guest VM driver from different main release branches cannot be used together. For example, you cannot use the vGPU Manager from release 9.1 with guest VM drivers from release 7.2.

See [VM running older NVIDIA vGPU drivers fails to initialize vGPU when booted.](#)

This requirement does not apply to the NVIDIA vGPU software license sever. All releases of NVIDIA vGPU software are compatible with **all** releases of the license server.

1.1. Updates in Release 9.0

New Features in Release 9.0

- ▶ NVIDIA vComputeServer vGPUs for artificial intelligence, deep learning, and high-performance computing workloads
- ▶ Error correcting code (ECC) memory support
- ▶ Page retirement support
- ▶ Peer-to-peer CUDA transfers over NVLink support
- ▶ Configurable times slices for equal share schedulers and fixed share schedulers
- ▶ New configuration parameter to specify host ID of a licensed client
- ▶ Miscellaneous bug fixes

Hardware and Software Support Introduced in Release 9.0

- ▶ Support for Windows 10 May 2019 Update (1903) as a guest OS

1.2. Updates in Release 9.1

New Features in Release 9.1

- ▶ Support for NVIDIA vComputeServer vGPUs on the following GPUs:
 - ▶ Quadro RTX 6000
 - ▶ Quadro RTX 8000
- ▶ Security updates
- ▶ Miscellaneous bug fixes

1.3. Updates in Release 9.2

New Features in Release 9.2

- ▶ Miscellaneous bug fixes
- ▶ Security updates
- ▶ Limitation on the maximum number of NVIDIA vComputeServer vGPUs to eight vGPUs per physical GPU, irrespective of the available hardware resources of the physical GPU

- ▶ Inclusion of two Virtual GPU Manager RPM packages for Red Hat Enterprise Linux with KVM 8.0:
 - ▶ One package for the GA Linux KVM kernel
 - ▶ One package for the updated z-stream kernel

Chapter 2.

VALIDATED PLATFORMS

This release family of NVIDIA vGPU software provides support for several NVIDIA GPUs on validated server hardware platforms, Red Hat Enterprise Linux with KVM hypervisor software versions, and guest operating systems. It also supports the version of NVIDIA CUDA Toolkit that is compatible with R430 drivers.

2.1. Supported NVIDIA GPUs and Validated Server Platforms

This release of NVIDIA vGPU software provides support for the following NVIDIA GPUs on Red Hat Enterprise Linux with KVM, running on validated server hardware platforms:

- ▶ GPUs based on the NVIDIA Maxwell™ graphic architecture:
 - ▶ Tesla M6 (vComputeServer is **not** supported.)
 - ▶ Tesla M10 (vComputeServer is **not** supported.)
 - ▶ Tesla M60 (vComputeServer is **not** supported.)
- ▶ GPUs based on the NVIDIA Pascal™ architecture:
 - ▶ Tesla P4
 - ▶ Tesla P6
 - ▶ Tesla P40
 - ▶ Tesla P100 PCIe 16 GB
 - ▶ Tesla P100 SXM2 16 GB
 - ▶ Tesla P100 PCIe 12GB
- ▶ GPUs based on the NVIDIA Volta architecture:
 - ▶ Tesla V100 SXM2
 - ▶ Tesla V100 SXM2 32GB
 - ▶ Tesla V100 PCIe
 - ▶ Tesla V100 PCIe 32GB

- ▶ Tesla V100 FHHL
- ▶ GPUs based on the NVIDIA Turing™ architecture:
 - ▶ Tesla T4
 - ▶ Quadro RTX 6000 in displayless mode (GRID Virtual PC and GRID Virtual Applications are **not** supported. vComputeServer is supported **only** since release 9.1.)
 - ▶ Quadro RTX 8000 in displayless mode (GRID Virtual PC and GRID Virtual Applications are **not** supported. vComputeServer is supported **only** since release 9.1.)

In displayless mode, local physical display connectors are disabled.

For a list of validated server platforms, refer to [NVIDIA GRID Certified Servers](#).



Tesla M60 and M6 GPUs support compute mode and graphics mode. NVIDIA vGPU requires GPUs that support both modes to operate in graphics mode.

Recent Tesla M60 GPUs and M6 GPUs are supplied in graphics mode. However, your GPU might be in compute mode if it is an older Tesla M60 GPU or M6 GPU, or if its mode has previously been changed.

To configure the mode of Tesla M60 and M6 GPUs, use the `gpumodeswitch` tool provided with NVIDIA vGPU software releases.

Even in compute mode, Tesla M60 and M6 GPUs do **not** support NVIDIA vComputeServer vGPU types.

2.2. Hypervisor Software Releases

This release supports **only** the hypervisor software release listed in the table.



If a specific release, even an update release, is not listed, it's **not** supported.

Software	Releases Supported	Notes
Red Hat Enterprise Linux with KVM	8.0	All NVIDIA GPUs that NVIDIA vGPU software supports are supported with vGPU and in pass-through mode.
Red Hat Enterprise Linux with KVM	7.6, 7.5	All NVIDIA GPUs that NVIDIA vGPU software supports are supported with vGPU and in pass-through mode.
Red Hat Enterprise Linux with KVM	7.2 through 7.4	All NVIDIA GPUs that NVIDIA vGPU software supports are supported in pass-through mode only.

Software	Releases Supported	Notes
Red Hat Enterprise Linux with KVM	7.0, 7.1	Only the following NVIDIA GPUs are supported in pass-through mode only: <ul style="list-style-type: none"> ▶ Tesla M6 ▶ Tesla M10 ▶ Tesla M60
Red Hat Virtualization (RHV)	4.3, 4.2	All NVIDIA GPUs that NVIDIA vGPU software supports are supported with vGPU and in pass-through mode.
Red Hat Virtualization (RHV)	4.1	All NVIDIA GPUs that NVIDIA vGPU software supports are supported in pass-through mode only.

2.3. Guest OS Support

NVIDIA vGPU software supports several Windows releases and Linux distributions as a guest OS. The supported guest operating systems depend on the hypervisor software version.



Use only a guest OS release that is listed as supported by NVIDIA vGPU software with your virtualization software. To be listed as supported, a guest OS release must be supported not only by NVIDIA vGPU software, but also by your virtualization software. NVIDIA cannot support guest OS releases that your virtualization software does not support.

NVIDIA vGPU software supports **only** 64-bit guest operating systems. No 32-bit guest operating systems are supported.

2.3.1. Windows Guest OS Support



Red Hat Enterprise Linux with KVM and Red Hat Virtualization (RHV) support Windows guest operating systems only under specific Red Hat subscription programs. For details, see:

- ▶ [Certified guest operating systems for Red Hat Enterprise Linux with KVM](#)
- ▶ [Certified Guest Operating Systems in Red Hat OpenStack Platform and Red Hat Enterprise Virtualization](#)

NVIDIA vGPU software supports **only** the 64-bit Windows releases listed in the table as a guest OS on Red Hat Enterprise Linux with KVM. The releases of Red Hat Enterprise Linux with KVM for which a Windows release is supported depend on whether NVIDIA vGPU or pass-through GPU is used.



If a specific release, even an update release, is not listed, it's **not** supported.

Guest OS	NVIDIA vGPU - Red Hat Enterprise Linux with KVM Releases	Pass-Through GPU - Red Hat Enterprise Linux with KVM Releases
Windows Server 2019	RHEL KVM 8.0, 7.6, 7.5 RHV 4.3, 4.2	RHEL KVM 8.0, 7.6, 7.5, 7.4, 7.3, 7.2, 7.1, 7.0 RHV 4.3, 4.2, 4.1
Windows Server 2016 1709, 1607	RHEL KVM 8.0, 7.6, 7.5 RHV 4.3, 4.2	RHEL KVM 8.0, 7.6, 7.5, 7.4, 7.3, 7.2, 7.1, 7.0 RHV 4.3, 4.2, 4.1
Windows Server 2012 R2	RHEL KVM 8.0, 7.6, 7.5 RHV 4.3, 4.2	RHEL KVM 8.0, 7.6, 7.5, 7.4, 7.3, 7.2, 7.1, 7.0 RHV 4.3, 4.2, 4.1
Windows Server 2008 R2	RHEL KVM 8.0, 7.6, 7.5 RHV 4.3, 4.2	RHEL KVM 8.0, 7.6, 7.5, 7.4, 7.3, 7.2, 7.1, 7.0 RHV 4.3, 4.2, 4.1 Supported only on GPUs based on the Maxwell architecture
Windows 10: <ul style="list-style-type: none"> ▶ May 2019 Update (1903) ▶ October 2018 Update (1809) ▶ Spring Creators Update (1803) ▶ Fall Creators Update (1709) ▶ Creators Update (1703) ▶ Anniversary Update (1607) ▶ November Update (1511) ▶ RTM (1507) 	RHV 4.3, 4.2	RHV 4.3, 4.2, 4.1
Windows 8.1 Update	RHV 4.3, 4.2	RHV 4.3, 4.2, 4.1
Windows 7	RHV 4.3, 4.2	RHV 4.3, 4.2, 4.1 Supported only on GPUs based on the Maxwell architecture

2.3.2. Linux Guest OS Support

NVIDIA vGPU software supports **only** the 64-bit Linux distributions listed in the table as a guest OS on Red Hat Enterprise Linux with KVM. The releases of Red Hat Enterprise Linux with KVM for which a Linux release is supported depend on whether NVIDIA vGPU or pass-through GPU is used.



If a specific release, even an update release, is not listed, it's **not** supported.

Guest OS	NVIDIA vGPU - Red Hat Enterprise Linux with KVM Releases	Pass-Through GPU - Red Hat Enterprise Linux with KVM Releases
Red Hat Enterprise Linux 8.0	RHEL KVM 8.0	RHEL KVM 8.0
CentOS 8.0	RHEL KVM 8.0	RHEL KVM 8.0
Since 9.1: Red Hat Enterprise Linux 7.0-7.7	RHEL KVM 8.0, 7.6, 7.5 RHV 4.3, 4.2	RHEL KVM 8.0, 7.6, 7.5, 7.4, 7.3, 7.2, 7.1, 7.0 RHV 4.3, 4.2, 4.1
9.0 only: Red Hat Enterprise Linux 7.0-7.6	RHEL KVM 8.0, 7.6, 7.5 RHV 4.3, 4.2	RHEL KVM 8.0, 7.6, 7.5, 7.4, 7.3, 7.2, 7.1, 7.0 RHV 4.3, 4.2, 4.1
Since 9.1: CentOS 7.0-7.7 See Note (1)	RHEL KVM 8.0, 7.6, 7.5 RHV 4.3, 4.2	RHEL KVM 8.0, 7.6, 7.5, 7.4, 7.3, 7.2, 7.1, 7.0 RHV 4.3, 4.2, 4.1
9.0 only: CentOS 7.0-7.6 See Note (1)	RHEL KVM 8.0, 7.6, 7.5 RHV 4.3, 4.2	RHEL KVM 8.0, 7.6, 7.5, 7.4, 7.3, 7.2, 7.1, 7.0 RHV 4.3, 4.2, 4.1
Red Hat Enterprise Linux 6.6	RHEL KVM 8.0, 7.6, 7.5 RHV 4.3, 4.2	RHEL KVM 8.0, 7.6, 7.5, 7.4, 7.3, 7.2, 7.1, 7.0 RHV 4.3, 4.2, 4.1
CentOS 6.6 See Note (1)	RHEL KVM 8.0, 7.6, 7.5 RHV 4.3, 4.2	RHEL KVM 8.0, 7.6, 7.5, 7.4, 7.3, 7.2, 7.1, 7.0 RHV 4.3, 4.2, 4.1



1. CentOS is not a certified guest OS for Red Hat Enterprise Linux with KVM or RHV.

2.4. NVIDIA CUDA Toolkit Version Support

The releases in this release family of NVIDIA vGPU software support NVIDIA CUDA Toolkit 10.1 Update 1.

For more information about NVIDIA CUDA Toolkit, see [CUDA Toolkit 10.1 Documentation](#).



If you are using NVIDIA vGPU software with CUDA on Linux, avoid conflicting installation methods by installing CUDA from a distribution-independent runtime package. Do not install CUDA from distribution-specific RPM or Deb package.

To ensure that the NVIDIA vGPU software graphics driver is not overwritten when CUDA is installed, deselect the CUDA driver when selecting the CUDA components to install.

For more information, see [NVIDIA CUDA Installation Guide for Linux](#).

2.5. Multiple vGPU Support

To support applications and workloads that are compute or graphics intensive, multiple vGPUs can be added to a single VM. The assignment of more than one vGPU to a VM is supported only on a subset of vGPUs and Red Hat Enterprise Linux with KVM releases.

Supported vGPUs

Only Q-series and C-series vGPUs that are allocated all of the physical GPU's frame buffer are supported.

GPU Architecture	Board	vGPU	
Turing	Tesla T4	T4-16Q	
		T4-16C	
	Quadro RTX 6000	RTX6000-24Q	
	Quadro RTX 8000	RTX8000-48Q	
Volta	Tesla V100 SXM2 32GB	V100DX-32Q	
		V100D-32C	
	Tesla V100 PCIe 32GB	V100D-32Q	
		V100D-32C	
	Tesla V100 SXM2	V100X-16Q	
		V100X-16C	
	Tesla V100 PCIe	V100-16Q	
		V100-16C	
	Tesla V100 FHHL	V100L-16Q	
		V100L-16C	
	Pascal	Tesla P100 SXM2	P100X-16Q
			P100X-16C
Tesla P100 PCIe 16GB		P100-16Q	
		P100-16C	
Tesla P100 PCIe 12GB		P100C-12Q	
		P100C-12C	

GPU Architecture	Board	vGPU
	Tesla P40	P40-24Q
		P40-24C
	Tesla P6	P6-16Q
		P6-16C
	Tesla P4	P4-8Q
		P4-8C
Maxwell	Tesla M60	M60-8Q
	Tesla M10	M10-8Q
	Tesla M6	M6-8Q

Maximum vGPUs per VM

NVIDIA vGPU software supports up to a maximum of 16 vGPUs per VM on Red Hat Enterprise Linux with KVM.

Supported Hypervisor Releases

Red Hat Enterprise Linux with KVM 8.0, 7.6, and 7.5 only.

RHV 4.3 and 4.2 only.

2.6. Peer-to-Peer CUDA Transfers over NVLink Support

Peer-to-peer CUDA transfers enable device memory between vGPUs on different GPUs that are assigned to the same VM to be accessed from within the CUDA kernels. NVLink is a high-bandwidth interconnect that enables fast communication between such vGPUs. Peer-to-Peer CUDA Transfers over NVLink is supported only on a subset of vGPUs, Red Hat Enterprise Linux with KVM releases, and guest OS releases.

Supported vGPUs

Only Q-series and C-series vGPUs that are allocated all of the physical GPU's frame buffer on physical GPUs that support NVLink are supported.

GPU Architecture	Board	vGPU
Turing	Quadro RTX 6000	RTX6000-24Q
	Quadro RTX 8000	RTX8000-48Q

GPU Architecture	Board	vGPU
Volta	Tesla V100 SXM2 32GB	V100DX-32Q
		V100DX-32C
	Tesla V100 SXM2	V100X-16Q
		V100X-16C
Pascal	Tesla P100 SXM2	P100X-16Q
		P100X-16C

Supported Hypervisor Releases

Peer-to-Peer CUDA Transfers over NVLink are supported on all hypervisor releases that support the assignment of more than one vGPU to a VM. For details, see [Multiple vGPU Support](#).

Supported Guest OS Releases

Linux only. Peer-to-Peer CUDA Transfers over NVLink are **not** supported on Windows.

Limitations

- ▶ Only direct connections are supported. NVSwitch is not supported.
- ▶ PCIe is not supported.
- ▶ SLI is not supported.

Chapter 3.

KNOWN PRODUCT LIMITATIONS

Known product limitations for this release of NVIDIA vGPU software are described in the following sections.

3.1. Total frame buffer for vGPUs is less than the total frame buffer on the physical GPU

Some of the physical GPU's frame buffer is used by the hypervisor on behalf of the VM for allocations that the guest OS would otherwise have made in its own frame buffer. The frame buffer used by the hypervisor is not available for vGPUs on the physical GPU. In NVIDIA vGPU deployments, frame buffer for the guest OS is reserved in advance, whereas in bare-metal deployments, frame buffer for the guest OS is reserved on the basis of the runtime needs of applications.

If error-correcting code (ECC) memory is enabled on a physical GPU that does not have HBM2 memory, the amount of frame buffer that is usable by vGPUs is further reduced. All types of vGPU are affected, not just vGPUs that support ECC memory.

The approximate amount of frame buffer that NVIDIA vGPU software reserves can be calculated from the following formula:

$$\text{reserved-fb} = \text{vgpu-profile-size-in-mb} \div 16 + 64 + \text{ecc-adjustments}$$

reserved-fb

The total amount of reserved frame buffer in Mbytes that is not available for vGPUs.

vgpu-profile-size-in-mb

The amount of frame buffer in Mbytes allocated to a single vGPU. This amount depends on the vGPU type. For example, for the T4-16Q vGPU type, *vgpu-profile-size-in-mb* is 16384.

ecc-adjustments

The amount of frame buffer in Mbytes that is not usable by vGPUs when ECC is enabled on a physical GPU that does not have HBM2 memory. If ECC is disabled or the GPU has HBM2 memory, *ecc-adjustments* is 0.

3.2. Issues may occur with graphics-intensive OpenCL applications on vGPU types with limited frame buffer

Description

Issues may occur when graphics-intensive OpenCL applications are used with vGPU types that have limited frame buffer. These issues occur when the applications demand more frame buffer than is allocated to the vGPU.

For example, these issues may occur with the Adobe Photoshop and LuxMark OpenCL Benchmark applications:

- ▶ When the image resolution and size are changed in Adobe Photoshop, a program error may occur or Photoshop may display a message about a problem with the graphics hardware and a suggestion to disable OpenCL.
- ▶ When the LuxMark OpenCL Benchmark application is run, XID error 31 may occur.

Workaround

For graphics-intensive OpenCL applications, use a vGPU type with more frame buffer.

3.3. In pass through mode, all GPUs connected to each other through NVLink must be assigned to the same VM

Description

In pass through mode, all GPUs connected to each other through NVLink must be assigned to the same VM. If a subset of GPUs connected to each other through NVLink is passed through to a VM, unrecoverable error XID 74 occurs when the VM is booted. This error corrupts the NVLink state on the physical GPUs and, as a result, the NVLink bridge between the GPUs is unusable.

Workaround

Restore the NVLink state on the physical GPUs by resetting the GPUs or rebooting the hypervisor host.

3.4. vGPU profiles with 512 Mbytes or less of frame buffer support only 1 virtual display head on Windows 10

Description

To reduce the possibility of memory exhaustion, vGPU profiles with 512 Mbytes or less of frame buffer support only 1 virtual display head on a Windows 10 guest OS.

The following vGPU profiles have 512 Mbytes or less of frame buffer:

- ▶ Tesla M6-0B, M6-0Q
- ▶ Tesla M10-0B, M10-0Q
- ▶ Tesla M60-0B, M60-0Q

Workaround

Use a profile that supports more than 1 virtual display head and has at least 1 Gbyte of frame buffer.

3.5. NVENC requires at least 1 Gbyte of frame buffer

Description

Using the frame buffer for the NVIDIA hardware-based H.264/HEVC video encoder (NVENC) may cause memory exhaustion with vGPU profiles that have 512 Mbytes or less of frame buffer. To reduce the possibility of memory exhaustion, NVENC is disabled on profiles that have 512 Mbytes or less of frame buffer. Application GPU acceleration remains fully supported and available for all profiles, including profiles with 512 Mbytes or less of frame buffer. NVENC support from both Citrix and VMware is a recent feature and, if you are using an older version, you should experience no change in functionality.

The following vGPU profiles have 512 Mbytes or less of frame buffer:

- ▶ Tesla M6-0B, M6-0Q
- ▶ Tesla M10-0B, M10-0Q
- ▶ Tesla M60-0B, M60-0Q

Workaround

If you require NVENC to be enabled, use a profile that has at least 1 Gbyte of frame buffer.

3.6. VM running older NVIDIA vGPU drivers fails to initialize vGPU when booted

Description

A VM running a version of the NVIDIA guest VM drivers from a previous main release branch, for example release 4.4, will fail to initialize vGPU when booted on a Red Hat Enterprise Linux with KVM platform running the current release of Virtual GPU Manager.

In this scenario, the VM boots in standard VGA mode with reduced resolution and color depth. The NVIDIA virtual GPU is present in **Windows Device Manager** but displays a warning sign, and the following device status:

```
Windows has stopped this device because it has reported problems. (Code 43)
```

Depending on the versions of drivers in use, the Red Hat Enterprise Linux with KVM VM's `/var/log/messages` log file reports one of the following errors:

- ▶ An error message:

```
vmiop_log: error: Unable to fetch Guest NVIDIA driver information
```

- ▶ A version mismatch between guest and host drivers:

```
vmiop_log: error: Guest VGX version(1.1) and Host VGX version(1.2) do not match
```

- ▶ A signature mismatch:

```
vmiop_log: error: vGPU message signature mismatch.
```

Resolution

Install the current NVIDIA guest VM driver in the VM.

3.7. Single vGPU benchmark scores are lower than pass-through GPU

Description

A single vGPU configured on a physical GPU produces lower benchmark scores than the physical GPU run in pass-through mode.

Aside from performance differences that may be attributed to a vGPU's smaller frame buffer size, vGPU incorporates a performance balancing feature known as Frame Rate Limiter (FRL). On vGPUs that use the best-effort scheduler, FRL is enabled. On vGPUs that use the fixed share or equal share scheduler, FRL is disabled.

FRL is used to ensure balanced performance across multiple vGPUs that are resident on the same physical GPU. The FRL setting is designed to give good interactive remote graphics experience but may reduce scores in benchmarks that depend on measuring frame rendering rates, as compared to the same benchmarks running on a pass-through GPU.

Resolution

FRL is controlled by an internal vGPU setting. On vGPUs that use the best-effort scheduler, NVIDIA does not validate vGPU with FRL disabled, but for validation of benchmark performance, FRL can be temporarily disabled by setting `frame_rate_limiter=0` in the vGPU configuration file.

```
# echo "frame_rate_limiter=0" > /sys/bus/mdev/devices/vgpu-id/nvidia/vgpu_params
```

For example:

```
# echo "frame_rate_limiter=0" > /sys/bus/mdev/devices/aa618089-8b16-4d01-a136-25a0f3c73123/nvidia/vgpu_params
```

The setting takes effect the next time any VM using the given vGPU type is started.

With this setting in place, the VM's vGPU will run without any frame rate limit.

The FRL can be reverted back to its default setting as follows:

1. Clear all parameter settings in the vGPU configuration file.

```
# echo " " > /sys/bus/mdev/devices/vgpu-id/nvidia/vgpu_params
```



You cannot clear specific parameter settings. If your vGPU configuration file contains other parameter settings that you want to keep, you must reinstate them in the next step.

2. Set `frame_rate_limiter=1` in the vGPU configuration file.

```
# echo "frame_rate_limiter=1" > /sys/bus/mdev/devices/vgpu-id/nvidia/vgpu_params
```

If you need to reinstate other parameter settings, include them in the command to set `frame_rate_limiter=1`. For example:

```
# echo "frame_rate_limiter=1 disable_vnc=1" > /sys/bus/mdev/devices/aa618089-8b16-4d01-a136-25a0f3c73123/nvidia/vgpu_params
```

3.8. `nvidia-smi` fails to operate when all GPUs are assigned to GPU pass-through mode

Description

If all GPUs in the platform are assigned to VMs in pass-through mode, `nvidia-smi` will return an error:

```
[root@vgx-test ~]# nvidia-smi
Failed to initialize NVML: Unknown Error
```

This is because GPUs operating in pass-through mode are not visible to `nvidia-smi` and the NVIDIA kernel driver operating in the Red Hat Enterprise Linux with KVM host.

To confirm that all GPUs are operating in pass-through mode, confirm that the `vfio-pci` kernel driver is handling each device.

```
# lspci -s 05:00.0 -k
05:00.0 VGA compatible controller: NVIDIA Corporation GM204GL [Tesla M60] (rev
al)
Subsystem: NVIDIA Corporation Device 113a
Kernel driver in use: vfio-pci
```

Resolution

N/A

Chapter 4.

RESOLVED ISSUES

Only resolved issues that have been previously noted as known issues or had a noticeable user impact are listed. The summary and description for each resolved issue indicate the effect of the issue on NVIDIA vGPU software **before the issue was resolved**.

Issues Resolved in Release 9.0

Bug ID	Summary and Description
-	<p>Virtual GPU fails to start if ECC is enabled</p> <p>NVIDIA vGPU does not support error correcting code (ECC) memory. If ECC memory is enabled, NVIDIA vGPU fails to start.</p> <p>Starting with NVIDIA vGPU software release 9.0, NVIDIA vGPU supports ECC memory on GPUs and hypervisor software versions that support ECC.</p>

Issues Resolved in Release 9.1

Bug ID	Summary and Description
200534988	<p>Error XID 47 followed by multiple XID 32 errors</p> <p>After disconnecting Citrix Virtual Apps and Desktops and clicking the power button in the VM, error XID 47 occurs followed by multiple XID 32 errors. When these errors occur, the hypervisor host becomes unusable.</p>
200537078	<p>9.0 only: Hypervisor host hangs when persistence mode is set</p> <p>When persistence mode is set through the <code>nvidia-smi</code> command, a very large number of <code>nv_queue</code> worker threads is spawned, causing the hypervisor host to hang.</p>
200526633	<p>9.0 only: VM crashes after the volatile ECC error count is reset</p>

Bug ID	Summary and Description
	After the command <code>nvidia-smi -p 0</code> is run from a guest VM to reset the volatile ECC error count, the VM crashes.
200525006	9.0 only: Incorrect ECC error counts are reported for vGPUs on some GPUs Incorrect ECC error counts are reported for vGPUs on some GPUs when the command <code>nvidia-smi -q</code> is run from a guest VM.
200524555	9.0 only: On Linux VMs, the license directory is not deleted when the guest driver is uninstalled On Linux guest VMs, the license directory <code>/etc/nvidia/license</code> is not deleted when the NVIDIA vGPU software graphics driver is uninstalled.
200522255	9.0 only: No vComputeServer option available in NVIDIA X Server Settings The <code>vComputeServer</code> option is missing from the Manage License section in the NVIDIA X Server Settings window.

Issues Resolved in Release 9.2

Bug ID	Summary and Description
-	9.0, 9.1 Only: ECC memory with NVIDIA vGPU is not supported on Tesla M60 and Tesla M6 Error-correcting code (ECC) memory with NVIDIA vGPU is not supported on Tesla M60 and Tesla M6 GPUs. The effect of starting NVIDIA vGPU when it is configured on a Tesla M60 or Tesla M6 GPU on which ECC memory is enabled depends on your NVIDIA vGPU software release. <ul style="list-style-type: none">▶ 9.0 only: The hypervisor host fails.▶ 9.1 only: The VM fails to start.
-	9.0, 9.1 Only: Virtual GPU fails to start if ECC is enabled NVIDIA vGPU does not support ECC memory with the following GPUs: <ul style="list-style-type: none">▶ Tesla M60 GPUs▶ Tesla M6 GPUs If ECC memory is enabled and your GPU does not support ECC, NVIDIA vGPU fails to start.

Chapter 5.

KNOWN ISSUES

5.1. 9.0, 9.1 Only: ECC memory with NVIDIA vGPU is not supported on Tesla M60 and Tesla M6

Description

Error-correcting code (ECC) memory with NVIDIA vGPU is not supported on Tesla M60 and Tesla M6 GPUs. The effect of starting NVIDIA vGPU when it is configured on a Tesla M60 or Tesla M6 GPU on which ECC memory is enabled depends on your NVIDIA vGPU software release.

- ▶ **9.0 only:** The hypervisor host fails.
- ▶ **9.1 only:** The VM fails to start.

Workaround

Ensure that ECC memory is disabled on Tesla M60 and Tesla M6 GPUs. For more information, see [9.0, 9.1 Only: Virtual GPU fails to start if ECC is enabled](#).

Status

Resolved in NVIDIA vGPU software 9.2

5.2. 9.0, 9.1 Only: Virtual GPU fails to start if ECC is enabled

Description

Tesla M60, Tesla M6, and GPUs based on the Pascal GPU architecture, for example Tesla P100 or Tesla P4, support error correcting code (ECC) memory for improved data

integrity. Tesla M60 and M6 GPUs in graphics mode are supplied with ECC memory disabled by default, but it may subsequently be enabled using `nvidia-smi`. GPUs based on the Pascal GPU architecture are supplied with ECC memory enabled.

NVIDIA vGPU does not support ECC memory with the following GPUs:

- ▶ Tesla M60 GPUs
- ▶ Tesla M6 GPUs

If ECC memory is enabled and your GPU does not support ECC, NVIDIA vGPU fails to start.

The following error is logged in the Red Hat Enterprise Linux with KVM host's `/var/log/messages` log file:

```
vmiop_log: error: Initialization: VGX not supported with ECC Enabled.
```

Workaround

If you are using Tesla M60 or Tesla M6 GPUs, ensure that ECC is disabled on all GPUs.

Before you begin, ensure that NVIDIA Virtual GPU Manager is installed on your hypervisor.

1. Use `nvidia-smi` to list the status of all GPUs, and check for ECC noted as enabled on GPUs.

```
# nvidia-smi -q
=====NVSMI LOG=====
Timestamp                : Tue Dec 19 18:36:45 2017
Driver Version           : 384.99
Attached GPUs            : 1
GPU 0000:02:00.0
[...]
    Ecc Mode
      Current              : Enabled
      Pending              : Enabled
[...]
```

2. Change the ECC status to off on each GPU for which ECC is enabled.
 - ▶ If you want to change the ECC status to off for all GPUs on your host machine, run this command:

```
# nvidia-smi -e 0
```

- ▶ If you want to change the ECC status to off for a specific GPU, run this command:

```
# nvidia-smi -i id -e 0
```

id is the index of the GPU as reported by `nvidia-smi`.

This example disables ECC for the GPU with index 0000:02:00.0.

```
# nvidia-smi -i 0000:02:00.0 -e 0
```

3. Reboot the host.
4. Confirm that ECC is now disabled for the GPU.

```
# nvidia-smi -q
=====NVSMI LOG=====
Timestamp                : Tue Dec 19 18:37:53 2017
Driver Version           : 384.99
Attached GPUs            : 1
GPU 0000:02:00.0
[...]
    Ecc Mode
      Current              : Disabled
      Pending              : Disabled
[...]
```

If you later need to enable ECC on your GPUs, run one of the following commands:

- ▶ If you want to change the ECC status to on for all GPUs on your host machine, run this command:

```
# nvidia-smi -e 1
```

- ▶ If you want to change the ECC status to on for a specific GPU, run this command:

```
# nvidia-smi -i id -e 1
```

id is the index of the GPU as reported by `nvidia-smi`.

This example enables ECC for the GPU with index 0000:02:00.0.

```
# nvidia-smi -i 0000:02:00.0 -e 1
```

After changing the ECC status to on, reboot the host.

Status

Resolved in NVIDIA vGPU software 9.2

5.3. 9.0 only: Hypervisor host hangs when persistence mode is set

Description

When persistence mode is set through the `nvidia-smi` command, a very large number of `nv_queue` worker threads is spawned, causing the hypervisor host to hang.

When this issue occurs, the hypervisor host creates a kernel stack trace similar to the following example.

```
Jun 24 04:42:16 example-02 kernel: kernel BUG at /build/linux-Ue9GXV/
linux-4.15.0/drivers/pci/msi.c:352!
...
Jun 24 04:42:16 example-02 kernel: Call Trace:
Jun 24 04:42:16 example-02 kernel: pci_disable_msi+0x100/0x120
Jun 24 04:42:16 example-02 kernel: nv_open_device+0x411/0x8e0 [nvidia]
Jun 24 04:42:16 example-02 kernel: ? kmem_cache_alloc+0x158/0x1b0
Jun 24 04:42:16 example-02 kernel: nvidia_open+0x339/0x550 [nvidia]
Jun 24 04:42:16 example-02 kernel: ? lookup_fast+0xcc/0x320
Jun 24 04:42:16 example-02 kernel: nvidia_frontend_open+0x58/0xa0 [nvidia]
Jun 24 04:42:16 example-02 kernel: chrdev_open+0xc4/0x1b0
```

Status

Resolved in NVIDIA vGPU software 9.1

Ref.

200537078

5.4. RAPIDS cuDF merge fails on NVIDIA vGPU

Description

The merge function of the RAPIDS cuDF GPU data frame library fails on NVIDIA vGPU. This function fails because RAPIDS uses the Unified Memory feature of CUDA, which NVIDIA vGPU does not support.

Status

Open

Ref.

2642134

5.5. 9.0 only: Incorrect ECC error counts are reported for vGPUs on some GPUs

Description

Incorrect ECC error counts are reported for vGPUs on some GPUs when the command `nvidia-smi -q` is run from a guest VM.

This issue affects only vGPUs that reside on physical GPUs based on the NVIDIA Volta GPU architecture. For vGPUs on GPUs based on other architectures, the ECC error count is correct.

Status

Resolved in NVIDIA vGPU software 9.1

Ref. #

200525006

5.6. ECC memory settings for a vGPU cannot be changed by using NVIDIA X Server Settings

Description

The ECC memory settings for a vGPU cannot be changed from a Linux guest VM by using **NVIDIA X Server Settings**. After the ECC memory state has been changed on the **ECC Settings** page and the VM has been rebooted, the ECC memory state remains unchanged.

Workaround

Use the `nvidia-smi` command in the guest VM to enable or disable ECC memory for the vGPU as explained in *Virtual GPU Software User Guide*.

If the ECC memory state remains unchanged even after you use the `nvidia-smi` command to change it, use the workaround in [Changes to ECC memory settings for a Linux vGPU VM by nvidia-smi might be ignored](#).

Status

Open

Ref. #

200523086

5.7. Changes to ECC memory settings for a Linux vGPU VM by `nvidia-smi` might be ignored

Description

After the ECC memory state for a Linux vGPU VM has been changed by using the `nvidia-smi` command and the VM has been rebooted, the ECC memory state might remain unchanged.

This issue occurs when multiple NVIDIA configuration files in the system cause the kernel module option for setting the ECC memory state `RMGuestECCState` in `/etc/modprobe.d/nvidia.conf` to be ignored.

When the `nvidia-smi` command is used to enable ECC memory, the file `/etc/modprobe.d/nvidia.conf` is created or updated to set the kernel module option `RMGuestECCState`. Another configuration file in `/etc/modprobe.d/` that contains the keyword `NVreg_RegistryDwordsPerDevice` might cause the kernel module option `RMGuestECCState` to be ignored.

Workaround

This workaround requires administrator privileges.

1. Move the entry containing the keyword `NVreg_RegistryDwordsPerDevice` from the other configuration file to `/etc/modprobe.d/nvidia.conf`.
2. Reboot the VM.

Status

Open

Ref.

200505777

5.8. 9.0 only: VM crashes after the volatile ECC error count is reset

Description

After the command `nvidia-smi -p 0` is run from a guest VM to reset the volatile ECC error count, the VM crashes.

This issue does not occur if the ECC state in the VM is set to off.

Status

Resolved in NVIDIA vGPU software 9.1

Ref. #

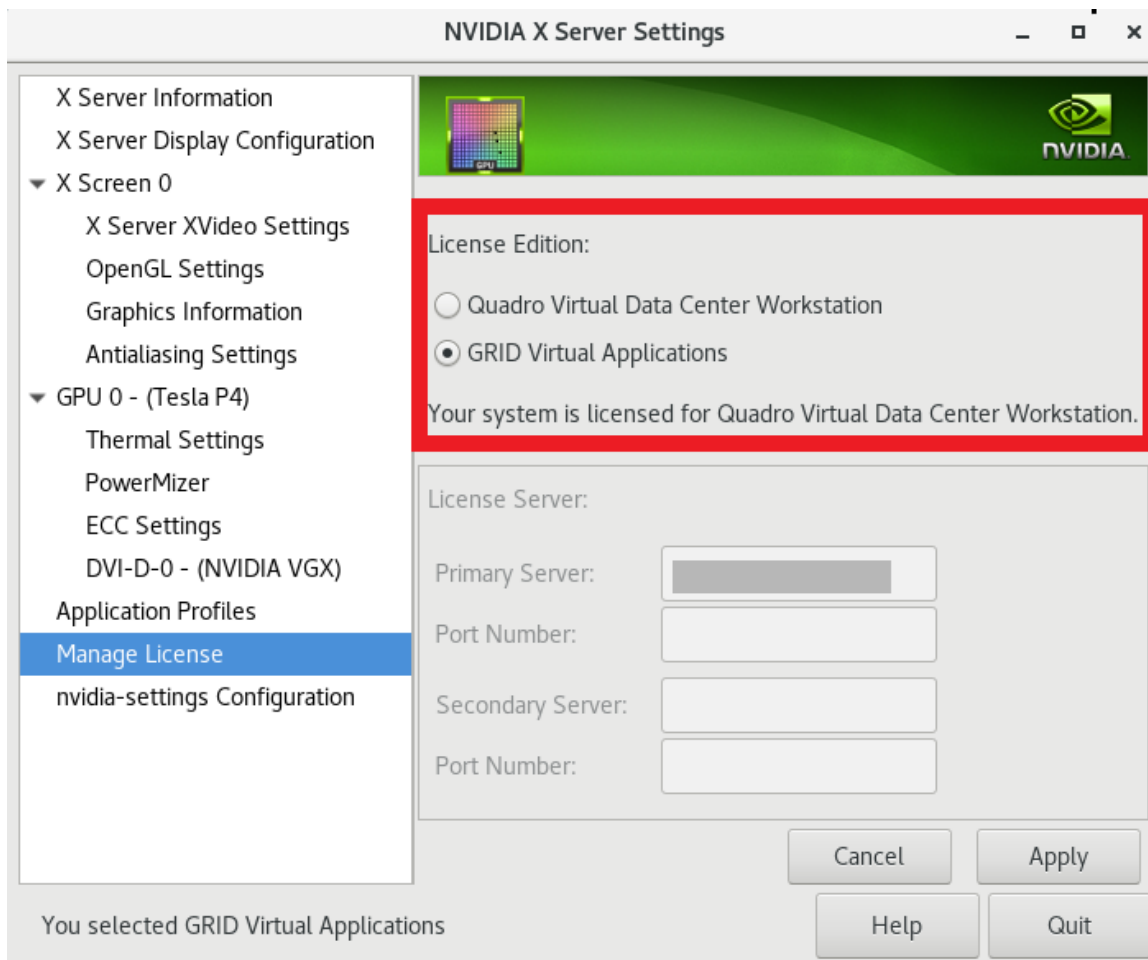
200526633

5.9. 9.0 only: No vComputeServer option available in NVIDIA X Server Settings

Description

The **vComputeServer** option is missing from the **Manage License** section in the **NVIDIA X Server Settings** window.

As a result of this missing option, the **NVIDIA X Server Settings** window incorrectly states that the system is licensed for Quadro vDWS when, in fact, the system is licensed for vComputeServer.



Workaround

If you are licensing a physical GPU for vComputeServer, you **must** use the configuration file `/etc/nvidia/gridd.conf`. See *Virtual GPU Client Licensing User Guide*.

Status

Resolved in NVIDIA vGPU software 9.1

Ref.

200522255

5.10. 9.0 only: On Linux VMs, the license directory is not deleted when the guest driver is uninstalled

Description

On Linux guest VMs, the license directory `/etc/nvidia/license` is not deleted when the NVIDIA vGPU software graphics driver is uninstalled.

The following error message is written to the `nvidia-uninstaller` log file:

```
Failed to delete the directory '/etc/nvidia' (Directory not empty).
```

Workaround

As root, remove the `/etc/nvidia/license` directory after the NVIDIA vGPU software graphics driver is uninstalled.

Status

Resolved in NVIDIA vGPU software 9.1

Ref.

200524555

5.11. Vulkan applications crash in Windows 7 guest VMs configured with NVIDIA vGPU

Description

In Windows 7 guest VMs configured with NVIDIA vGPU, applications developed with Vulkan APIs crash or throw errors when they are launched. Vulkan APIs require sparse texture support, but in Windows 7 guest VMs configured with NVIDIA vGPU, sparse textures are not enabled.

In Windows 10 guest VMs configured with NVIDIA vGPU, sparse textures are enabled and applications developed with Vulkan APIs run correctly in these VMs.

Status

Open

Ref. #

200381348

5.12. Host core CPU utilization is higher than expected for moderate workloads

Description

When GPU performance is being monitored, host core CPU utilization is higher than expected for moderate workloads. For example, host CPU utilization when only a small number of VMs are running is as high as when several times as many VMs are running.

Workaround

Disable monitoring of the following GPU performance statistics:

- ▶ vGPU engine usage by applications across multiple vGPUs
- ▶ Encoder session statistics
- ▶ Frame buffer capture (FBC) session statistics
- ▶ Statistics gathered by performance counters in guest VMs

Status

Open

Ref. #

2414897

5.13. Frame capture while the interactive logon message is displayed returns blank screen

Description

Because of a known limitation with NvFBC, a frame capture while the interactive logon message is displayed returns a blank screen.

An NvFBC session can capture screen updates that occur after the session is created. Before the logon message appears, there is no screen update after the message is shown and, therefore, a black screen is returned instead. If the NvFBC session is created after this update has occurred, NvFBC cannot get a frame to capture.

Workaround

Press **Enter** or wait for the screen to update for NvFBC to capture the frame.

Status

Not a bug

Ref. #

2115733

5.14. RDS sessions do not use the GPU with some Microsoft Windows Server releases

Description

When some releases of Windows Server are used as a guest OS, Remote Desktop Services (RDS) sessions do not use the GPU. With these releases, the RDS sessions by default use the Microsoft Basic Render Driver instead of the GPU. This default setting enables 2D DirectX applications such as Microsoft Office to use software rendering, which can be more efficient than using the GPU for rendering. However, as a result, 3D applications that use DirectX are prevented from using the GPU.

Version

- ▶ Windows Server 2016
- ▶ Windows Server 2012

Solution

Change the local computer policy to use the hardware graphics adapter for all RDS sessions.

1. Choose **Local Computer Policy > Computer Configuration > Administrative Templates > Windows Components > Remote Desktop Services > Remote Desktop Session Host > Remote Session Environment**.
2. Set the **Use the hardware default graphics adapter for all Remote Desktop Services sessions** option.

5.15. Even when the scheduling policy is equal share, unequal GPU utilization is reported

Description

When the scheduling policy is equal share, unequal GPU engine utilization can be reported for the vGPUs on the same physical GPU.

For example, GPU engine usage for three P40-8Q vGPUs on a Tesla P40 GPU might be reported as follows:

```
[root@localhost:~] nvidia-smi vgpu
Wed Jun 27 10:33:18 2018
```

NVIDIA-SMI 390.59		Driver Version: 390.59			
GPU	Name		Bus-Id		GPU-Util
	vGPU ID	Name	VM ID	VM Name	vGPU-Util
0	Tesla P40		00000000:81:00.0		52%
	2122661	GRID P40-8Q	2122682	centos7.4-xmpl-211...	19%
	2122663	GRID P40-8Q	2122692	centos7.4-xmpl-211...	0%
	2122659	GRID P40-8Q	2122664	centos7.4-xmpl-211...	25%
1	Tesla P40		00000000:85:00.0		58%
	2122662	GRID P40-8Q	2122689	centos7.4-xmpl-211...	0%
	2122658	GRID P40-8Q	2122667	centos7.4-xmpl-211...	59%
	2122660	GRID P40-8Q	2122670	centos7.4-xmpl-211...	0%

The vGPU utilization of the vGPU 2122658 is reported as 59%. However, the expected vGPU utilization should not exceed 33%.

This behavior is a result of the mechanism that is used to measure GPU engine utilization.

Status

Open

Ref.

2175888

5.16. When the scheduling policy is fixed share, GPU utilization is reported as higher than expected

Description

When the scheduling policy is fixed share, GPU engine utilization can be reported as higher than expected for a vGPU.

For example, GPU engine usage for six P40-4Q vGPUs on a Tesla P40 GPU might be reported as follows:

```
[root@localhost:~] nvidia-smi vgpu
Mon Aug 20 10:33:18 2018
```

NVIDIA-SMI 390.42		Driver Version: 390.42	
GPU	Name	Bus-Id	GPU-Util
vGPU ID	Name	VM ID	vGPU-Util
0	Tesla P40	00000000:81:00.0	99%
	85109 GRID P40-4Q	85110 win7-xmpl-146048-1	32%
	87195 GRID P40-4Q	87196 win7-xmpl-146048-2	39%
	88095 GRID P40-4Q	88096 win7-xmpl-146048-3	26%
	89170 GRID P40-4Q	89171 win7-xmpl-146048-4	0%
	90475 GRID P40-4Q	90476 win7-xmpl-146048-5	0%
	93363 GRID P40-4Q	93364 win7-xmpl-146048-6	0%
1	Tesla P40	00000000:85:00.0	0%

The vGPU utilization of vGPU 85109 is reported as 32%. For vGPU 87195, vGPU utilization is reported as 39%. And for 88095, it is reported as 26%. However, the expected vGPU utilization of any vGPU should not exceed approximately 16.7%.

This behavior is a result of the mechanism that is used to measure GPU engine utilization.

Status

Open

Ref.

2227591

5.17. License is not acquired in Windows VMs

Description

When a windows VM configured with a licensed vGPU is started, the VM fails to acquire a license.

Error messages in the following format are written to the NVIDIA service logs:

```
[000000020.860152600 sec] - [Logging.lib] ERROR: [nvGridLicensing.FlexUtility]
353@FlexUtility::LogFneError : Error: Failed to add trusted storage. Server
URL : license-server-url -
[1,7E2,2,1[7000003F,0,9B00A7]]

System machine type does not match expected machine type..
```

Workaround

This workaround requires administrator privileges.

1. Stop the **NVIDIA Display Container LS** service.
2. Delete the contents of the folder %SystemDrive%:\Program Files\NVIDIA Corporation\Grid Licensing.
3. Start the **NVIDIA Display Container LS** service.

Status

Closed

Ref.

200407287

5.18. nvidia-smi reports that vGPU migration is supported on all hypervisors

Description

The command `nvidia-smi vgpu -m` shows that vGPU migration is supported on all hypervisors, even hypervisors or hypervisor versions that do not support vGPU migration.

Status

Closed

Ref. #

200407230

5.19. Hot plugging and unplugging vCPUs causes a blue-screen crash in Windows VMs

Description

Hot plugging or unplugging vCPUs causes a blue-screen crash in Windows VMs that are running NVIDIA vGPU software graphics drivers.

When the blue-screen crash occurs, one of the following error messages may also be seen:

- ▶ `SYSTEM_SERVICE_EXCEPTION (nvlddmkm.sys)`
- ▶ `DRIVER_IRQL_NOT_LESS_OR_EQUAL (nvlddmkm.sys)`

NVIDIA vGPU software graphics drivers do not support hot plugging and unplugging of vCPUs.

Status

Closed

Ref. #

2101499

5.20. Luxmark causes a segmentation fault on an unlicensed Linux client

Description

If the Luxmark application is run on a Linux guest VM configured with NVIDIA vGPU that is booted without acquiring a license, a segmentation fault occurs and the application core dumps. The fault occurs when the application cannot allocate a CUDA object on NVIDIA vGPUs where CUDA is disabled. On NVIDIA vGPUs that can support CUDA, CUDA is disabled in unlicensed mode.

Status

Not an NVIDIA bug.

Ref. #

200330956

5.21. Resolution is not updated after a VM acquires a license and is restarted

Description

In a Red Enterprise Linux 7.3 guest VM, an increase in resolution from 1024×768 to 2560×1600 is not applied after a license is acquired and the `gridd` service is restarted. This issue occurs if the `multimonitor` parameter is added to the `xorg.conf` file.

Version

Red Enterprise Linux 7.3

Status

Open

Ref. #

200275925

5.22. A segmentation fault in Dbus code causes `nvidia-gridd` to exit on Red Hat Enterprise Linux and CentOS

Description

On Red Hat Enterprise Linux 6.8 and 6.9, and CentOS 6.8 and 6.9, a segmentation fault in Dbus code causes the `nvidia-gridd` service to exit.

The `nvidia-gridd` service uses Dbus for communication with **NVIDIA X Server Settings** to display licensing information through the **Manage License** page. Disabling the GUI for licensing resolves this issue.

To prevent this issue, the GUI for licensing is disabled by default. You might encounter this issue if you have enabled the GUI for licensing and are using Red Hat Enterprise Linux 6.8 or 6.9, or CentOS 6.8 and 6.9.

Version

Red Hat Enterprise Linux 6.8 and 6.9

CentOS 6.8 and 6.9

Status

Open

Ref. #

- ▶ 200358191
- ▶ 200319854
- ▶ 1895945

5.23. No Manage License option available in NVIDIA X Server Settings by default

Description

By default, the **Manage License** option is not available in **NVIDIA X Server Settings**. This option is missing because the GUI for licensing on Linux is disabled by default to work around the issue that is described in [A segmentation fault in Dbus code causes nvidia-gridd to exit on Red Hat Enterprise Linux and CentOS](#).

Workaround

This workaround requires `sudo` privileges.



Do not use this workaround with Red Hat Enterprise Linux 6.8 and 6.9 or CentOS 6.8 and 6.9. To prevent a segmentation fault in Dbus code from causing the `nvidia-gridd` service from exiting, the GUI for licensing must be disabled with these OS versions.

If you are licensing a physical GPU for vComputeServer, you **must** use the configuration file `/etc/nvidia/gridd.conf`.

1. If **NVIDIA X Server Settings** is running, shut it down.
2. If the `/etc/nvidia/gridd.conf` file does not already exist, create it by copying the supplied template file `/etc/nvidia/gridd.conf.template`.
3. As root, edit the `/etc/nvidia/gridd.conf` file to set the `EnableUI` option to `TRUE`.
4. Start the `nvidia-gridd` service.


```
# sudo service nvidia-gridd start
```

When **NVIDIA X Server Settings** is restarted, the **Manage License** option is now available.

Status

Open

5.24. Licenses remain checked out when VMs are forcibly powered off

Description

NVIDIA vGPU software licenses remain checked out on the license server when non-persistent VMs are forcibly powered off.

The NVIDIA service running in a VM returns checked out licenses when the VM is shut down. In environments where non-persistent licensed VMs are not cleanly shut down, licenses on the license server can become exhausted. For example, this issue can occur in automated test environments where VMs are frequently changing and are not guaranteed to be cleanly shut down. The licenses from such VMs remain checked out against their MAC address for seven days before they time out and become available to other VMs.

Resolution

If VMs are routinely being powered off without clean shutdown in your environment, you can avoid this issue by shortening the license borrow period. To shorten the license borrow period, set the `LicenseInterval` configuration setting in your VM image. For details, refer to *Virtual GPU Client Licensing User Guide*.

Status

Closed

Ref.

1694975

5.25. VM bug checks after the guest VM driver for Windows 10 RS2 is installed

Description

When the VM is rebooted after the guest VM driver for Windows 10 RS2 is installed, the VM bug checks. When Windows boots, it selects one of the standard supported video modes. If Windows is booted directly with a display that is driven by an NVIDIA driver, for example a vGPU on Citrix Hypervisor, a blue screen crash occurs.

This issue occurs when the screen resolution is switched from VGA mode to a resolution that is higher than 1920×1200.

Fix

Download and install [Microsoft Windows Update KB4020102](#) from the Microsoft Update Catalog.

Workaround

If you have applied the fix, ignore this workaround.

Otherwise, you can work around this issue until you are able to apply the fix by not using resolutions higher than 1920×1200.

1. Choose a GPU profile in Citrix XenCenter that does not allow resolutions higher than 1920×1200.
2. Before rebooting the VM, set the display resolution to 1920×1200 or lower.

Status

Not an NVIDIA bug

Ref.

200310861

5.26. GNOME Display Manager (GDM) fails to start on Red Hat Enterprise Linux 7.2 and CentOS 7.0

Description

GDM fails to start on Red Hat Enterprise Linux 7.2 and CentOS 7.0 with the following error:

```
Oh no! Something has gone wrong!
```

Workaround

Permanently enable permissive mode for Security Enhanced Linux (SELinux).

1. As root, edit the `/etc/selinux/config` file to set SELINUX to permissive.

```
SELINUX=permissive
```

2. Reboot the system.

```
~]# reboot
```

For more information, see [Permissive Mode](#) in *Red Hat Enterprise Linux 7 SELinux User's and Administrator's Guide*.

Status

Not an NVIDIA bug

Ref.

200167868

Notice

ALL NVIDIA DESIGN SPECIFICATIONS, REFERENCE BOARDS, FILES, DRAWINGS, DIAGNOSTICS, LISTS, AND OTHER DOCUMENTS (TOGETHER AND SEPARATELY, "MATERIALS") ARE BEING PROVIDED "AS IS." NVIDIA MAKES NO WARRANTIES, EXPRESSED, IMPLIED, STATUTORY, OR OTHERWISE WITH RESPECT TO THE MATERIALS, AND EXPRESSLY DISCLAIMS ALL IMPLIED WARRANTIES OF NONINFRINGEMENT, MERCHANTABILITY, AND FITNESS FOR A PARTICULAR PURPOSE.

Information furnished is believed to be accurate and reliable. However, NVIDIA Corporation assumes no responsibility for the consequences of use of such information or for any infringement of patents or other rights of third parties that may result from its use. No license is granted by implication of otherwise under any patent rights of NVIDIA Corporation. Specifications mentioned in this publication are subject to change without notice. This publication supersedes and replaces all other information previously supplied. NVIDIA Corporation products are not authorized as critical components in life support devices or systems without express written approval of NVIDIA Corporation.

HDMI

HDMI, the HDMI logo, and High-Definition Multimedia Interface are trademarks or registered trademarks of HDMI Licensing LLC.

OpenCL

OpenCL is a trademark of Apple Inc. used under license to the Khronos Group Inc.

Trademarks

NVIDIA, the NVIDIA logo, NVIDIA GRID, vGPU, Pascal, Quadro, and Tesla are trademarks or registered trademarks of NVIDIA Corporation in the U.S. and other countries. Other company and product names may be trademarks of the respective companies with which they are associated.

Copyright

© 2013-2019 NVIDIA Corporation. All rights reserved.